

# Pagoda Christmas Ornament

Designed By

Paula Adams

Visions by Paula

[www.beadpatterns-paulaadams.com](http://www.beadpatterns-paulaadams.com)

## Supply List

**This pattern is designed to be made with size 11 Japanese cylinder beads.** (Cylinder beads are usually called Delicas.) The pattern will not work if other size or type of beads are used.

### CYLINDER BEADS:

Color A: large bottom section (green in sample) - 4 grams (DB1536)

Color B: middle section (red in sample) - 4 grams (DB654)

Color C: top section (blue in sample) - 4 grams (DB216)

Color D: outline color (gold in sample) - 3 grams (DB42 or DB31)

### SPECIALITY DANGLE BEADS:

The ornament will have 6 dangles (5 around the outside and 1 in the middle).

The beads for the dangles can be anything you want. I usually use size 4 to 8 mm beads with drops or a larger bead at the end of each dangles.

### OTHER ITEMS:

Barrel Swivel to finish the top (optional)

thread (I use size B nymo)

needles (size 10, 11 or 12)

### STITCHES AND TECHNIQUES USED:

The primary stitch used in the Pagoda is tubular peyote. I do not recommend trying dimensional peyote if you are not comfortable with this stitch. The other techniques used in the Pagoda are Decreases and Increases Sets within the tubular peyote stitch and overlay work. A tutorial on how to do increases and decreases sets is located on the last page of these instructions.



## The Bottom Section

The ornament is started at the bottom (largest) section.

- Pick up the following string: 9A, 1D, 9A, 1D, 9A, 1D, 9A, 1D, 9A, 1D (for a total of 50 beads). A portion of this string is shown a red-outlined beads in Figure A.

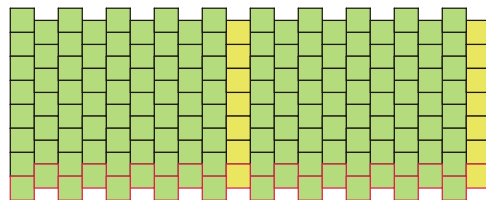


Figure A

- Form a circle by threading the needle back through the first 20 beads (the thread should be extending from the second D-colored bead).
- Using the tubular peyote stitch, bead another 13 rows for a total of 15 rows. Figure A shows a portion of these 15 rows (Picture 1).



Picture 1

You are now ready to start the first Decrease Set.

### Decrease Set 1:

- Row 1: Using color A, peyote around, skipping a bead at the D-colored (gold) vertical lines (Picture 2). The bead count will be 20.
- Row 2: Using color A, peyote around, adding a D-colored bead in the space created by the decrease (Picture 3).
- Row 3: Using color A, peyote around as normal (Picture 4)



Picture 2



Picture 3



Picture 4

### Decrease Set 2:

- Row 1: Using color D (gold), peyote around, skipping a bead over the previous decrease (Picture 5). The bead count will be 15.
- Row 2: Using color D, peyote around, add a bead in the space created by the decrease (Picture 6).
- Row 3: Using color D, peyote around as normal (Picture 7).
- Using color D, peyote 2 more rows for a total of 5 D-colored rows (Picture 8).



Picture 5



Picture 6



Picture 7



Picture 8

## The Middle Section

You start the Middle Section by doing an Increase Set.

- Row 1: Using color B (red), peyote around, adding 2 bead over the previous decrease location (over the vertical D-colored lines) (Picture 9).
- Row 2: Using color B, peyote around, adding a D-colored bead between the 2 increase beads (Picture 10). The bead count will be 20.



Picture 9



Picture 10



Picture 11

- Row 3: Using color B, peyote as normal (Picture 11).
- Continue to peyote around for another 10 rows. This section will be worked with color B, EXCEPT for the section dividers which will be worked with color D. Picture 12 shows what the middle section will look like. Notice that there will be 6 D-colored vertical beads.



Picture 12

#### *Decrease Set 1:*

- Row 1: Using color B, peyote around, skipping a bead at the over the D-colored (gold) vertical lines. The bead count will be 15.
- Row 2: Using color B, peyote around, adding a D-colored bead in the space created by the decrease.
- Row 3: Using color B, peyote around as normal. Picture 13 shows what the ornament will look like after the first Decrease Set is completed.



Picture 13

#### *Decrease Set 2:*

- Row 1: Using color D (gold), peyote around, skipping a bead over the previous decrease. The bead count will be 10.
- Row 2: Using color D, peyote around, add a bead (gold) in the space created by the decrease.
- Row 3: Using color D, peyote around as normal. Picture 14 shows what the ornament will look like after the second Decrease Set is completed.
- Using color D, peyote 2 more rows for a total of 5 D-colored rows (Picture 15).



Picture 14



Picture 15

## **The Top Section**

You start the Top Section by doing an Increase Set.

- Row 1: Using color C (blue), peyote around, adding 2 bead over the previous decrease location (over the D-colored vertical lines) (Picture 16).
- Row 2: Using color C, peyote around, adding a D-colored bead between the 2 increase beads (Picture 17). The bead count will be 15.
- Row 3: Using color C, peyote as normal (Picture 18).
- Continue to peyote around for another 8 rows. This section will be worked with color C, EXCEPT for the section dividers which will be worked with color D. Picture 19 shows what the top section will look like. Notice that there will be 5 D-colored vertical beads.



Picture 16



Picture 17



Picture 18



Picture 19

### Decrease Set 1:

- Row 1: Using color C, peyote around, skipping a bead at the over the D-colored (gold) vertical lines. The bead count will be 10.
- Row 2: Using color C, peyote around, adding a D-colored bead in the space created by the decrease.
- Row 3: Using color C, peyote around as normal. Picture 20 shows what the ornament will look like after the first Decrease Set is completed.



Picture 20

### Decrease Set 2:

- Row 1: Using color C, peyote around, skipping a bead over the previous decrease. The bead count will be 5.
- Row 2: Using color C, peyote around, add a D-colored bead (gold) in the space created by the decrease.
- Row 3: DO NOT COMPLETE THE THIRD ROW OF THE DECREASE SET (Picture 21).



Picture 21

You complete the top of the ornament by adding a barrel swivel. A barrel swivel can be purchased at any sporting goods store in the fishing department. Some of them have a safety pin attachment. This safety pin can easily be removed. I use size 10 for small ornaments and size 7 for larger ornaments. Picture 22 shows what a barrel swivel looks like with the safety pin and Picture 23 what it looks like with the safety pin removed. I recommend attaching a piece of thread to the swivel, so you will have something to hold to while attaching it to the ornament. Remove the thread once the swivel is secured.



Picture 22



Picture 23

Thread the needles through all 5 D-colored beads but do not pull tight. Carefully insert the swivel and pull the thread going through the 5 beads snug (Picture 24).



Picture 24

If you are not using a barrel swivel, circle stitch the 5 D-colored beads several times. Pick up 8 cylinder beads (usually color D) and go into a color D bead on the other side of the circle, forming a loop. Go back into the 8 cylinder beads and the original bead. Reinforce several times and secure. Notice that the loop is not centered as there is an odd number of beads in the circle (Picture 25).



Picture 25

## Finishing the Bottom

The bottom is completed by doing a series of 3 complete Decrease Sets and the first 2 rows of the 4<sup>th</sup> Decrease Set. Use color A, except for on the 2<sup>nd</sup> row of each Decrease Set. On that row add a D-colored bead in the space created by the decrease, the rest of the beads on the row will be color A. To close circle stitch the 5 beads (color D) and secure the thread. Notice that all the Decrease Sets line up (Picture 26).



Picture 26

Picture 27 show what the ornament will look like at this point.



Picture 27

# Adding the Overlay

## Bottom Section:

Attach a piece of thread near the center of one of the bottom panels and weave it over until it is extending from the bead indicated by an arrow above the 'start here' mark in Figure B.

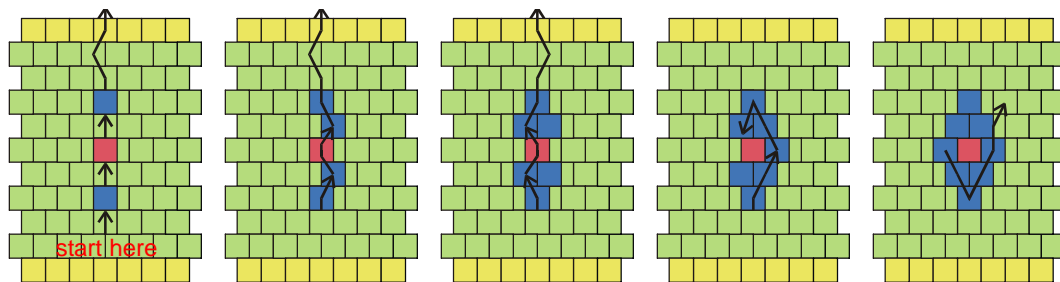


Figure B

Figure C

Figure D

Figure E

Figure F

### *First Pass:*

- Pick up the overlay beads (1C, 1A, 1C) as shown in Figure B.
- After you have attached all the overlay beads in the current panels, weave through the beads on the ornament and repeat on the other four panels.
- Once you have completed all the panels, weave over until the thread is extending from the first overlay bead attached on this pass (Picture 28).



Picture 28

### *Second Pass:*

This pass is worked with color C.

- Pick up a bead, go into the center A-colored bead, pick up a C-colored bead and go into the C-colored bead (Figure C and Picture 29).
- Weave over to the next panel and repeat around.



Picture 29

### *Third Pass:*

This pass is worked with color C, exactly like the second pass.

- Pick up a bead, go into the center A-colored bead, pick up a C-colored bead and go into the C-colored bead (Figure D and Picture 30).
- Weave over to the next panel and repeat around.



Picture 30

### *Fourth Pass:*

This pass is worked with color C.

- With the thread extending from the bead added on the Second Pass, pick up a C-colored bead, go into the end C-colored bead added on the Second Pass (Figure E and Picture 31).



Picture 31

- Thread the needle into the end C-colored bead of the Third Pass, going in the opposite direction.
- Pick up a C-colored bead and go into the other C-colored bead added on the Third Pass.
- Weave the needle over until it is extending from the first bead added on this pass and down into the nearest A-colored bead on the ornament (Figure F and Picture 32).
- Weave over and repeat on each of the other panels.
- Weave the thread up into the middle section.



Picture 32

**Middle Section:**

In the Middle Section the overlay is completed in each panel before moving over to the next panel. Weave the thread over until it is extending from the bead indicated by an arrow above the ‘start here’ mark in Figure G.

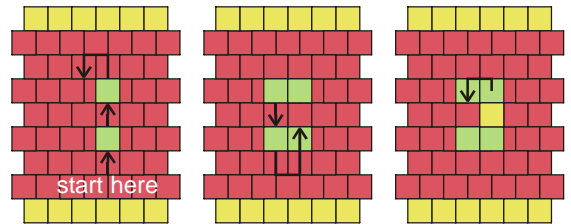


Figure G      Figure H      Figure I

- Add the 2 A- colored beads as shown in Figure G and Picture 33.
- Go through the bead on the ornament directly above the one the thread is extending from, going in the opposite direction.



Picture 33      Picture 34      Picture 35

- Add the 2 A-colored beads as shown in Figure H and Picture 34).
- Weave the needle over until it is extending from the first bead added in Figure G.

- Pick up a D-colored bead and go into the second A-colored bead on the current side (Figure I and Picture 35).

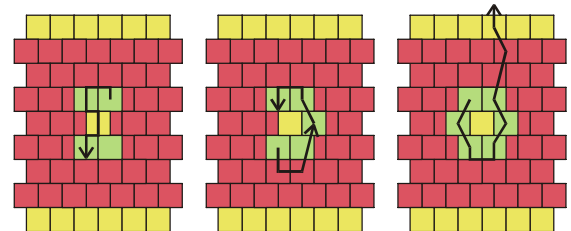


Figure J      Figure K      Figure L

- Go into the A-colored bead on the other side, go through the D-colored bead and through the other D-colored bead on the other side to center it (Figure J and Picture 36).



Picture 36      Picture 37      Picture 38

- Weave back to the first side and add the point A-colored bead (Figure K and Picture 37).

- Weave back to the second side and add the point A-colored bead then weave back to the end bead and into the B-colored beads of the ornament (Figure L and Picture 38).

- Weave over to the next panel and repeat around.

- Weave up into the top section.

## Top Section:

In the Top Section the overlay is worked all in B-colored beads.

### *First Pass:*

Notice the placement of the first overlay row. It is slightly above center.

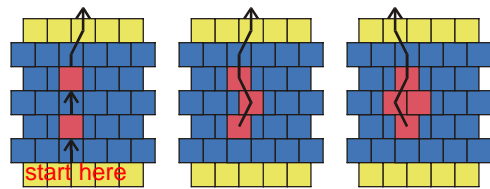


Figure M

Figure N

Figure O

- Add the 2 B-colored beads as shown in Figure M and Picture 39.
- Weave over to the next panel and repeat.



Picture 39

- ### *Second Pass:*
- With the thread extending from the first overlay bead add a single B-colored bead, go through the other overlay bead (Figure N and Picture 40).
  - Weave over to the next panel and repeat.



Picture 40



Picture 41

### *Third Pass:*

- With the thread extending from the first overlay bead add a single B-colored bead, go through the other overlay bead (Figure O and Picture 41).
- Weave over to the next panel and repeat.



Picture 42

Picture 42 shows what the ornament will look like after completing the overlays.

## Adding the Mock Netting (Optional):

You might choose to add the last bit of embellishment.

- Attach a piece of thread (about 12 inches) near the bottom of the top section near the bottom D-colored vertical bead.
- Go through the bottom vertical bead, pick up 7 D-colored beads and go into the top, point bead of the middle section overlay.
- Pick up 7 D-colored beads and go into the bottom vertical bead to form a V (Picture 43) and repeat around.
- Attach a piece of thread near the bottom of the middle section.
- Weave over to the bottom vertical bead.
- Pick up 8 D-colored beads and go into the top, point, bead of the bottom section overlay, pick up 8 D-colored beads and go into the bottom vertical bead. Repeat around (Picture 44).



Picture 43



Picture 44

## Adding the Dangles

The dangles can be anything you like. I usually put a longer dangle in the center and shorter dangles (5) around the outer edge. I placed the shorter dangles one or two decreases level up. In the Pagoda the shorter dangles are attached to the D-colored bead of the second decrease. Pick up 8 cylinder beads and the fancy beads. Go back up the fancy beads and 3 cylinder beads. Pick up 5 cylinder beads and into the D-colored bead of the next decrease. Repeat around.



Picture 45

Attach the hook and enjoy.

### INSTRUCTIONS FOR INCREASE SET:

- \* On the first row of an increase set, peyote across as normal until you get to the place where you want the increase, add 2 beads where you want the increase to be (in the picture the increases will be lined up with the gold beads) (Picture A).
- \* On the second row of an increase set, peyote across as normal until you get to the 2 beads added on the previous row. Add a bead between these 2 beads (shown as a gold bead in Picture B). NOTE: Be sure you add a bead before and after the 2-beads of the increase. Sometimes you have to force these beads into place.
- \* On the third, and last row, of an increase set, peyote across as normal, being sure to place a bead on either side of the top bead of the increase (Picture C).



Picture A



Picture B



Picture C

### INSTRUCTIONS FOR DECREASE SET:

- \* On the first row of a decrease set, peyote across as normal until you get to the place where you want the decrease, then simply skip a bead (Picture A) where you want the decrease to be (in the picture the decreases will be lined up with the gold beads).
- \* On the second row of a decrease set, peyote across as normal until you get to the place where you decreased. Add a SINGLE bead in the space created when you skipped a bead and pull snug (shown as a gold bead in Picture B).
- \* On the third, and last row, of a decrease set, peyote across as normal, being sure to place a bead on either side of the single bead added in the decrease space (Picture C)



Picture A



Picture B



Picture C